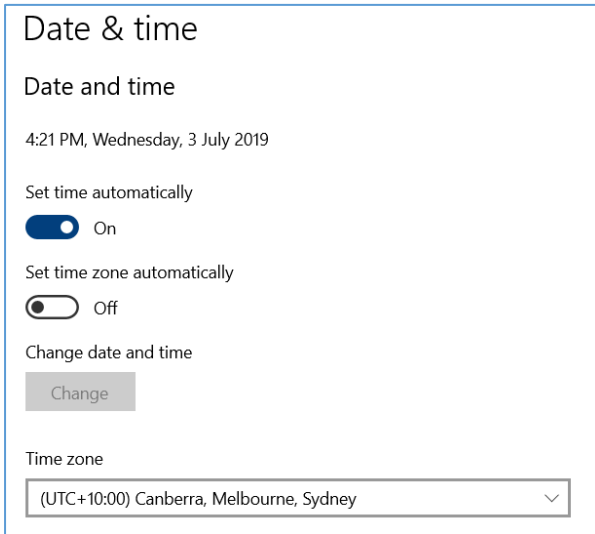


Gravostyle 9 Installation Guide

1. Go to System Settings & select Date & Time Settings & Make sure this is set to the correct region that you are in.



Date & time

Date and time

4:21 PM, Wednesday, 3 July 2019

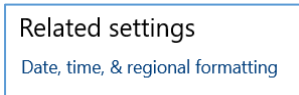
Set time automatically
 On

Set time zone automatically
 Off

Change date and time
[Change](#)

Time zone

2. Under Related Settings, Click on the Date, time & Regional formatting option.



Related settings

[Date, time, & regional formatting](#)

And again make sure that everything is set to your region correctly:



Region

Region

Country or region

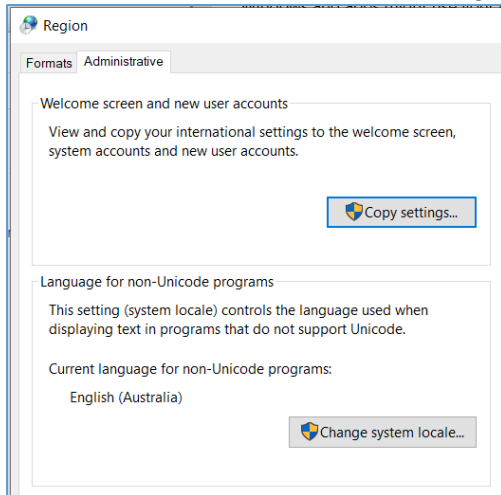
Windows and apps might use your country or region to give you local content.

Regional format

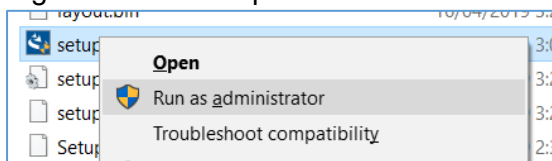
Current format: English (Australia)

Windows formats dates and times based on your language and regional preferences.

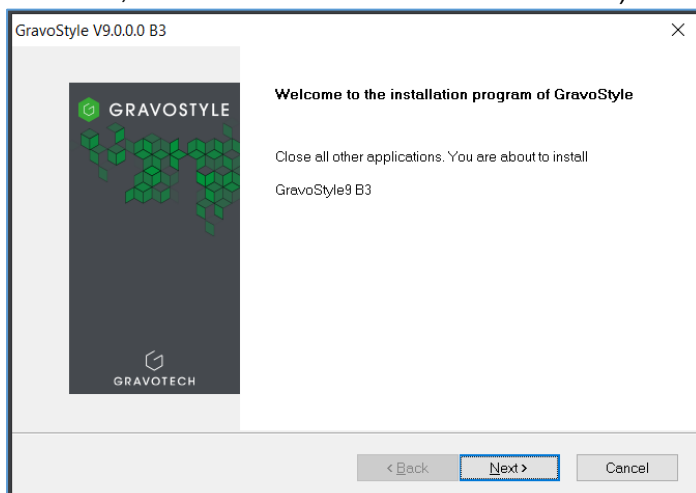
Click on Administrative & check Language for Unicode programs is set to English (Australia).



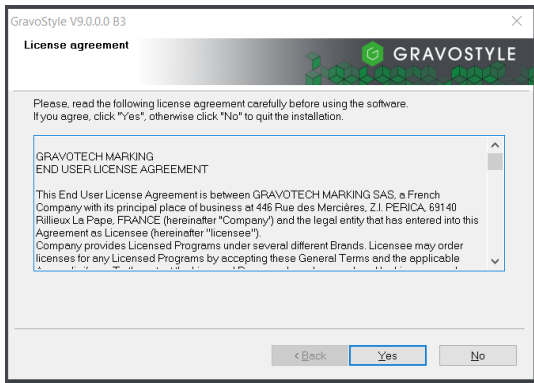
3. Restart your computer
4. Insert The Gravostyle USB Drive into your computer.
5. Create a folder named “GravoTech Files” in the C: Drive of the computer
6. Copy all files from the USB in to the [GravoTech Files](#) Folder
7. Open the GS9_64bits_Buildxxx folder & then the Gravotech Folder
8. Right click on “setup.exe” & select “Run as Administrator:



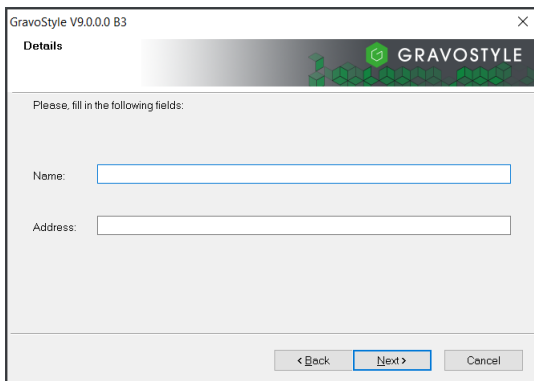
9. Select “Yes” to the notification “Do you want this app to make changes?”
10. Follow through the prompts filling in the relevant information, this will take a few minutes & may ask if you want to install Visual C Libraries, select “Yes” and continue with the install (you may be asked to restart, the install should continue afterwards).



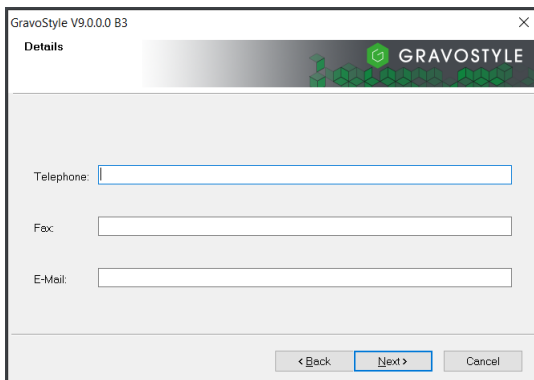
Select “Next”



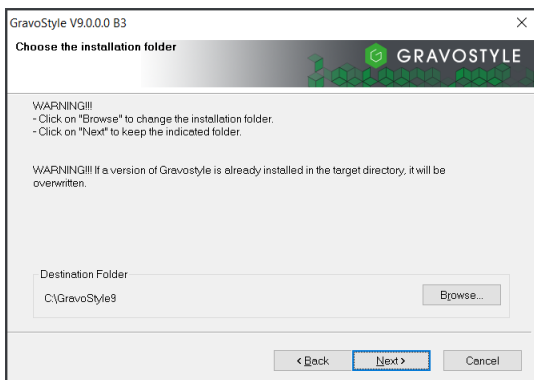
11. Select "Yes"



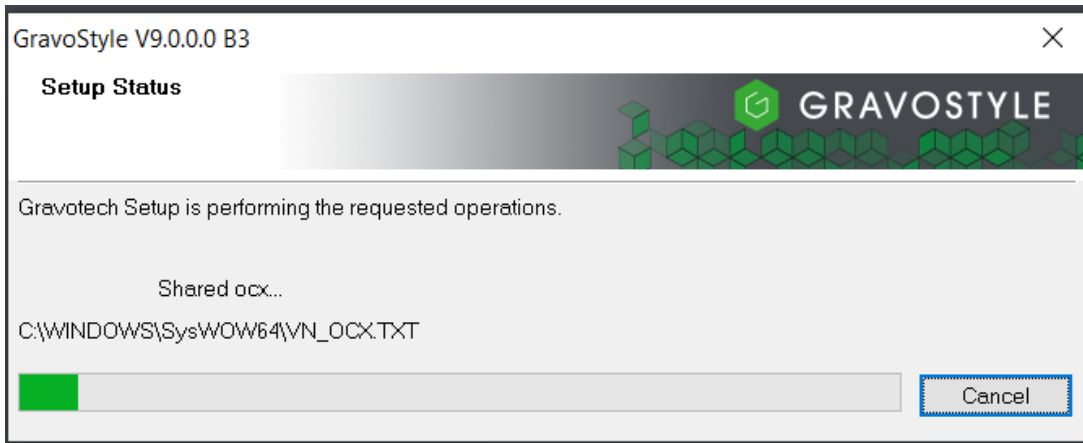
12. You can fill out the relevant information in these fields, Select "Next".



13. You can fill out the relevant information in these fields also, Select "Next".



14. **Please do not change the location**, Gravostyle has a requirement to be installed in the root directory, Select "Next".

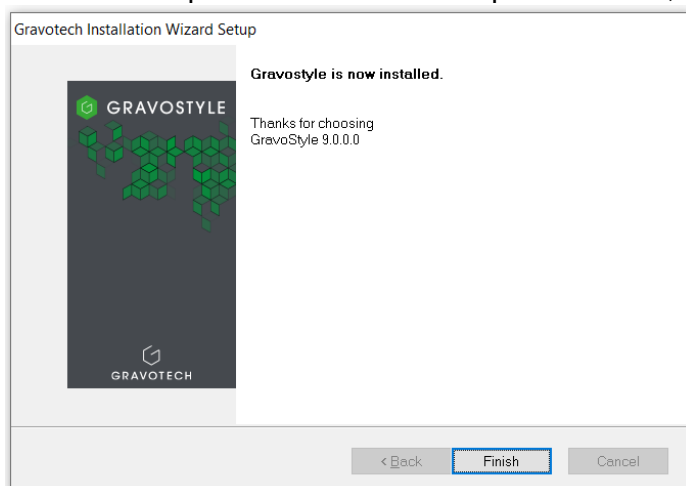


15. The install will take a few minutes.

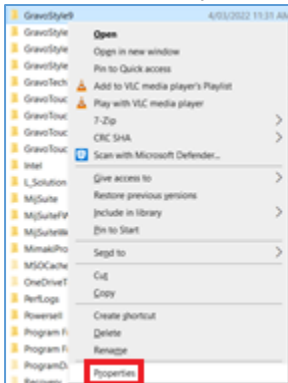
16. You will be asked to Plug in your Dongle, please plug it in, wait for it to light up & select “Redo”:



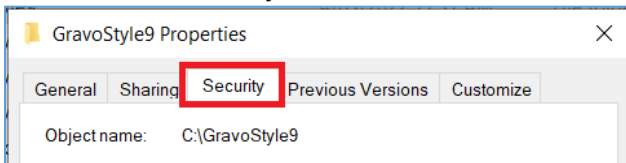
17. You'll now be presented with the completed screen, select “Finish”:



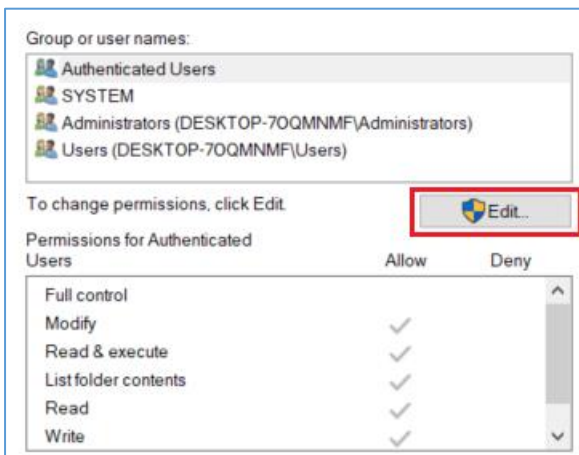
18. You will now need to set the Security Preferences for Gravostyle by going to [C:\](#) and right clicking on the GravoStyle9 Folder & selecting “Properties”:



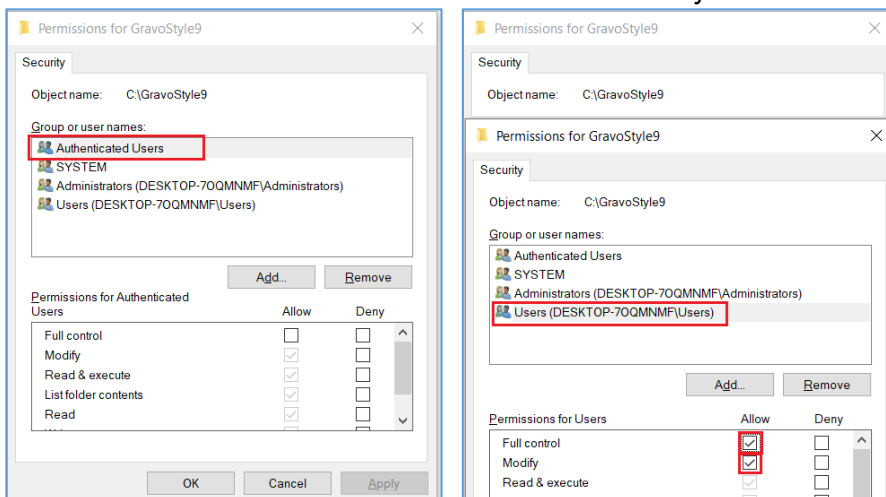
19. Click on the “Security” tab:



20. If any of the users listed do not have a tick next to “Full Control” or “Modify”, then you’ll need to click the Edit Button:

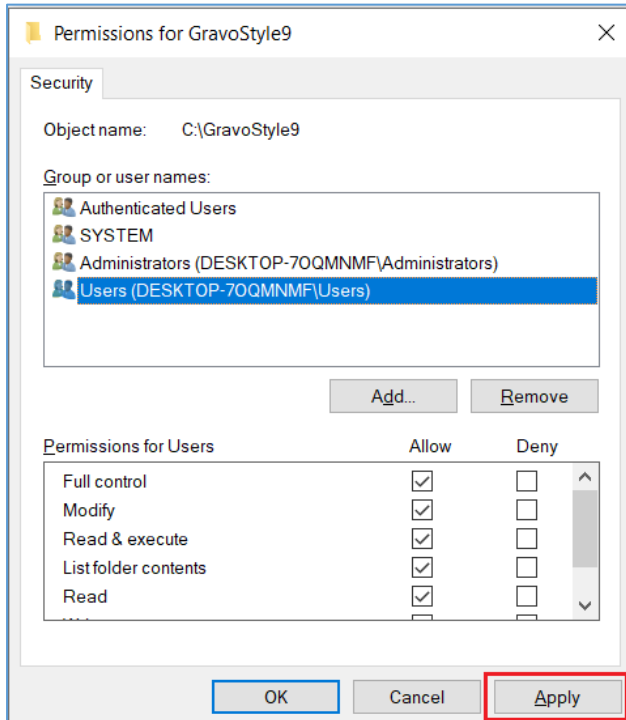


21. Tick the box under “Allow” for “Full Control” and “Modify” for each user:

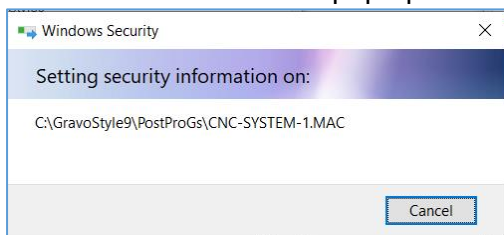


Ensure you also select & check each user in-between as listed above.

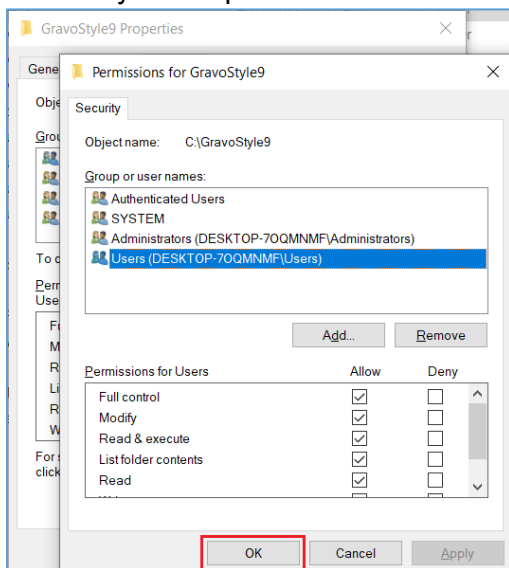
22. Click The “Apply” Button:



23. You’ll now see a window pop up with a number of file names scrolling through, please let this finish:



24. Once Finished, you can click “OK” on the “Permissions for GravoStyle9” window & also the “Gravostyle9 Properties” Window:



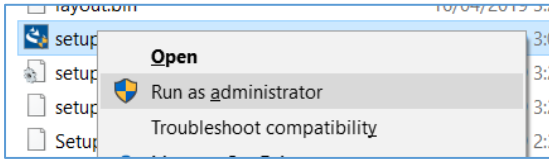
25. Open the [C:\GravoStyle9\DRIVER\](#) Folder.

26. Now continue with the following instruction according to the machine you have.

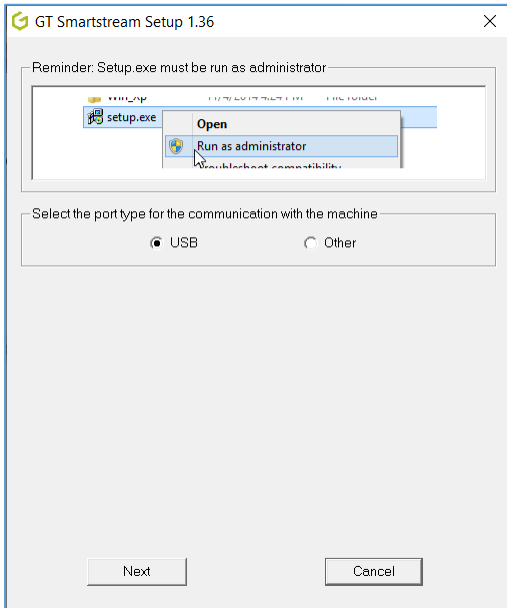
See Page 7 For Rotary Machines, Page 12 for Laser Gantry Machines,
And Page 17 For Galvo/WeLase

For Rotary Machines

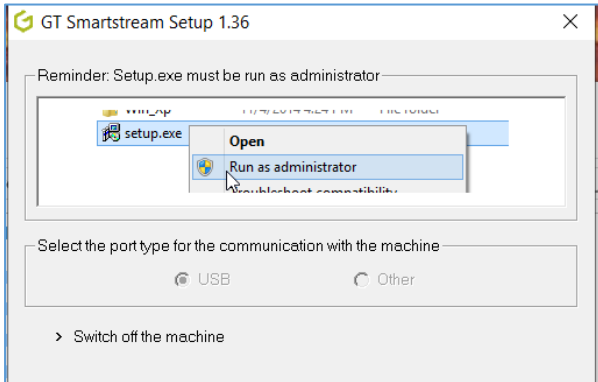
1. Open the GT Smartstream Folder
2. Right click on “setup.exe” & select “Run as Administrator:



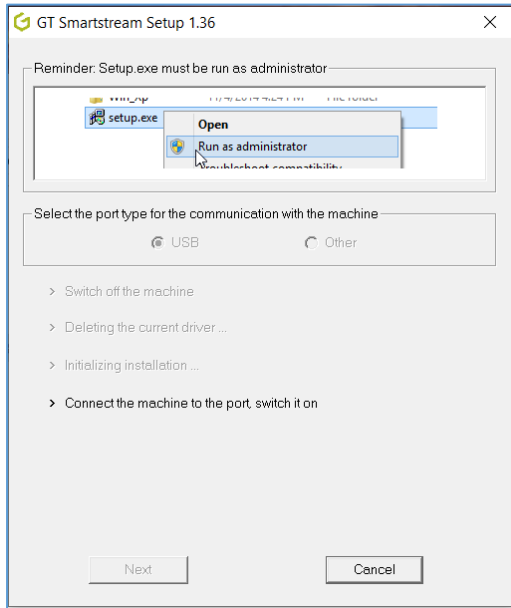
3. Select “Yes” to the notification “Do you want this app to make changes?”
4. USB should already be selected so just click next:



5. If your Machine is switched on & connected, it'll ask you to turn it off:

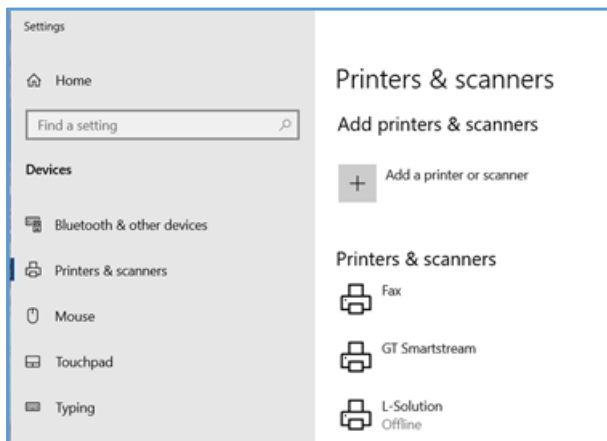


6. The driver will be installed & the installer will ask you to connect the machine & switch it on:



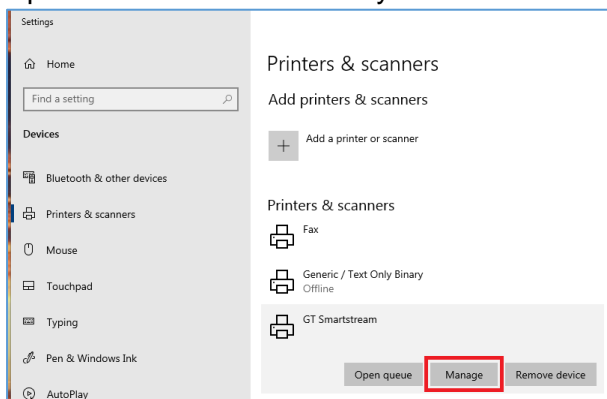
7. Once you switch the machine on, the installer should close (without any notice), this is normal.

8. If you open Printers & Scanners in Windows Settings, you should now see “GT Smartstream” as an installed Printer.

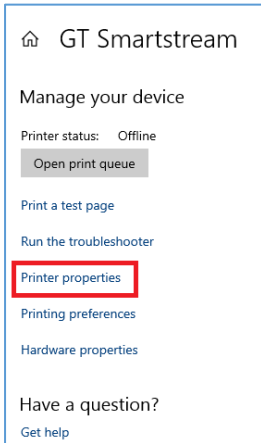


If it's not there you may need to restart.

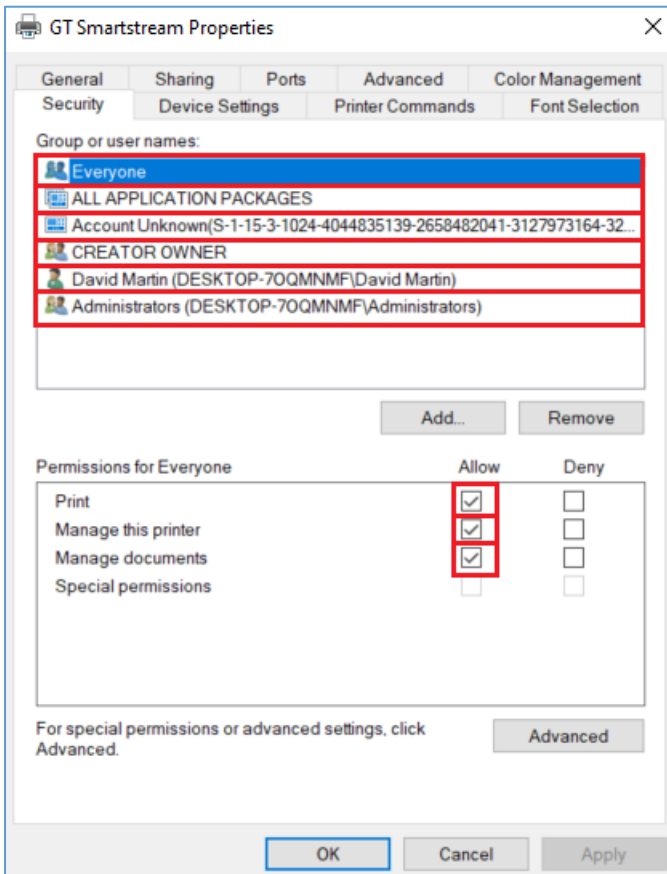
9. Open Printers & Scanners if you restarted & click on “GT Smartstream” & select “Manage”



10. In the settings Window that pops up, select “Printer Properties:



11. In the GT Smartstream Properties Box, Select the “Security” tab and make sure that all “Groups or Usernames” have a tick next to allow on “Print”, “Manage this printer” & “Manage Documents”:

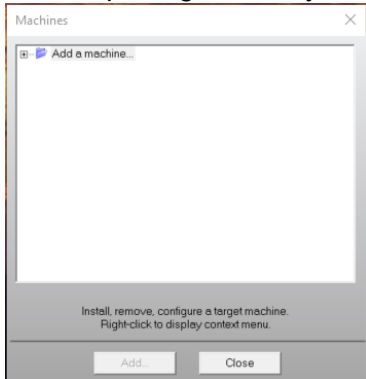


Then Click “Apply & then “OK”

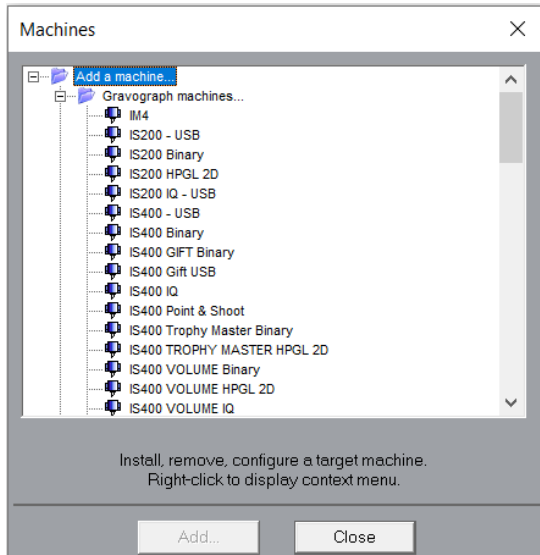
12. Now Launch “GS 9 Gravostyle 64 bits (9.0.0.0) 64 bits” from the Icon on your Desktop.

Launching Gravostyle

1. When opening Gravostyle for the first time, it'll prompt you to add your machine:



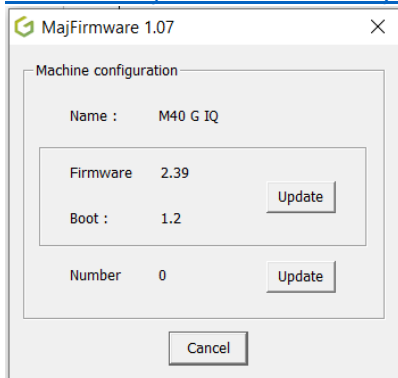
2. Click the “+” next to Add a Machine & then the “+” next to Gravograph machines:



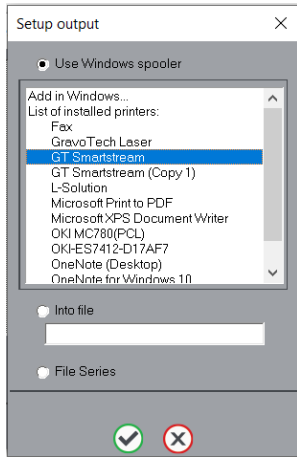
Scroll down until you find your machine & select “Add”.

If you are unsure of which model you have exactly, run this app:

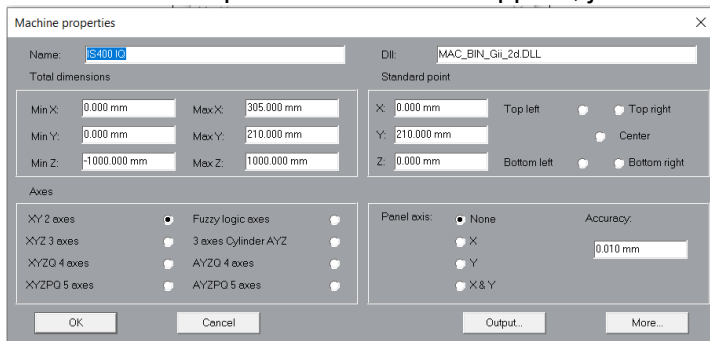
<C:\GravoStyle9\Firmware\MajFirmware.exe> and it'll tell you what you have:



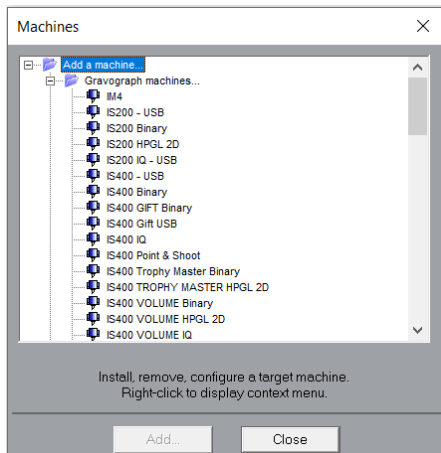
3. Once you've selected the machine & pressed “Add” the following screen will appear, select “GT Smartstream” and click the Tick:



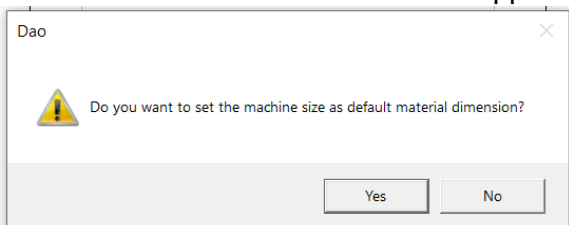
4. The Machine Properties Window will appear, just Click “OK



5. You Can now Close the “Machines” window by clicking “Close”:



6. Click “Yes” to the “Dao” window that appears.

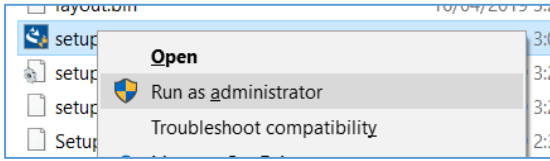


7. Gravostyle Will Be ready to use.

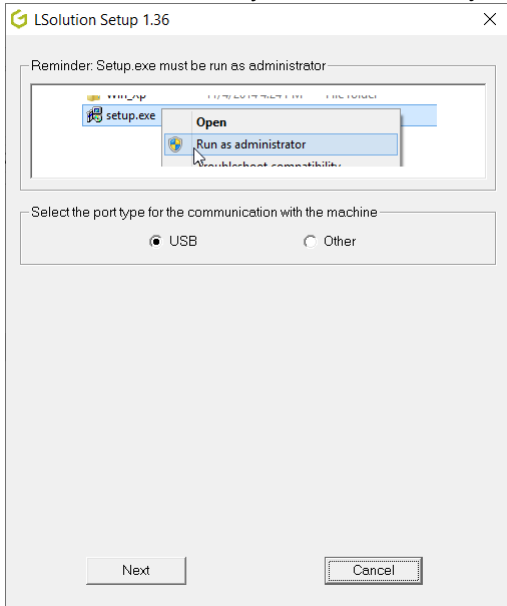
PLEASE SEE PAGE 22 FOR THE LAST STEP

For Laser Machines

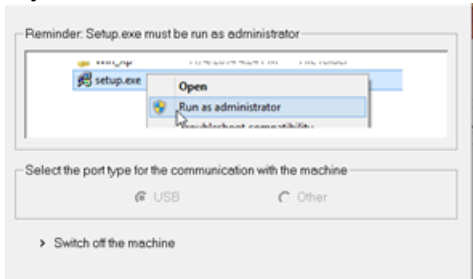
1. Open the LSolution Folder
2. Right click on “setup.exe” & select “Run as Administrator”:



3. Select “Yes” to the notification “Do you want this app to make changes?”
4. USB should already be selected so just click next:



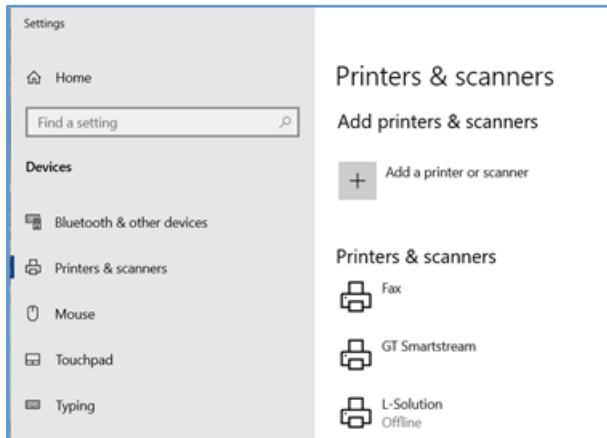
5. If your Machine is switched on & connected, it'll ask you to turn it off:



6. The driver will be installed & the installer will ask you to connect the machine & switch it on:

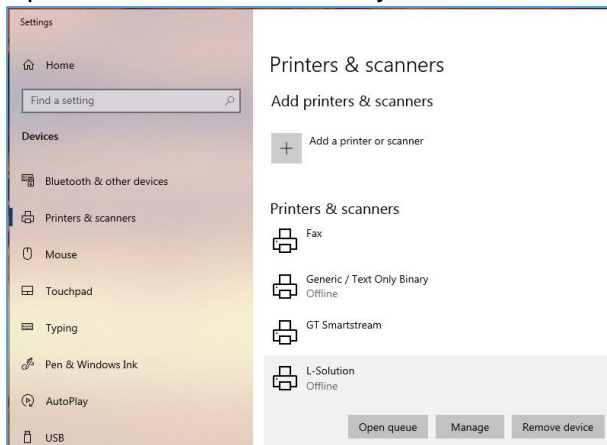


- Once you switch the machine on, the installer should close (without any notice), this is normal.
- If you open Printers & Scanners in Windows Settings, you should now see “L-Solution” as an installed Printer.

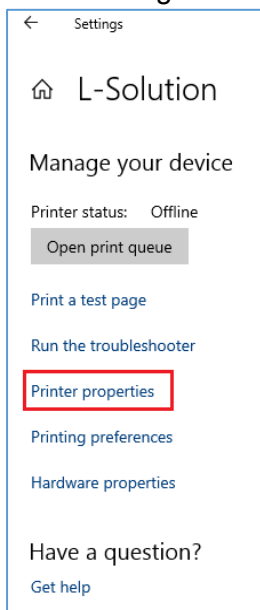


If it's not there you may need to restart.

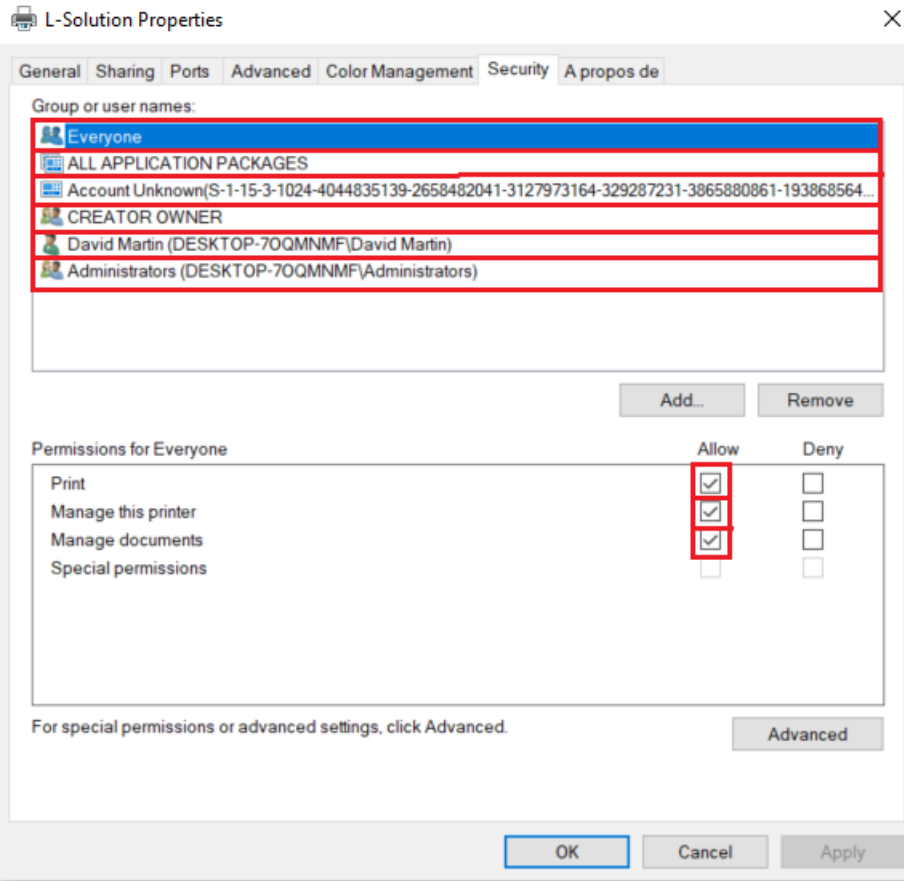
- Open Printers & Scanners if you restarted & click on “L-Solution” & select “Manage”



- In the settings Window that pops up, select “Printer Properties”:



- In the L-Solution Properties Box, Select the “Security” tab and make sure that all “Groups or Usernames” have a tick next to allow on “Print”, “Manage this printer” & “Manage Documents”:

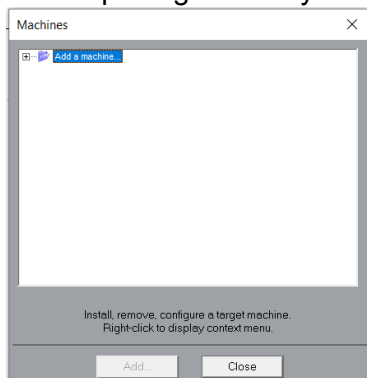


Then Click “Apply & then “OK”

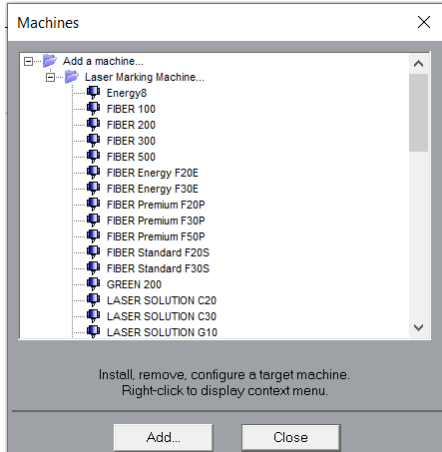
12. Now Launch “GS 9 Laser mode 64 bits (9.0.0.0) 64 bits” from the Icon on your Desktop.

Launching Gravostyle

1. When opening Gravostyle for the first time, it’ll prompt you to add your machine:



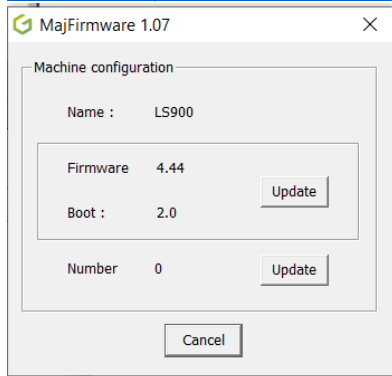
2. Click the “+” next to Add a Machine & then the “+” next to Laser Marking Machines:



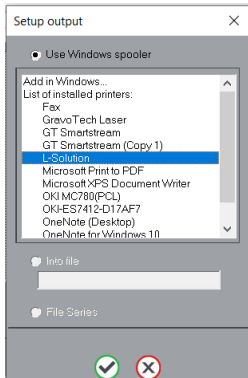
Scroll down until you find your machine & select “Add”.

If you are unsure of which model you have exactly, run this app:

<C:\GravoStyle9\Firmware\MajFirmware.exe> and it'll tell you what you have:



3. Once you've selected the machine & pressed “Add” the following screen will appear, select “L-Solution” and click the Tick:



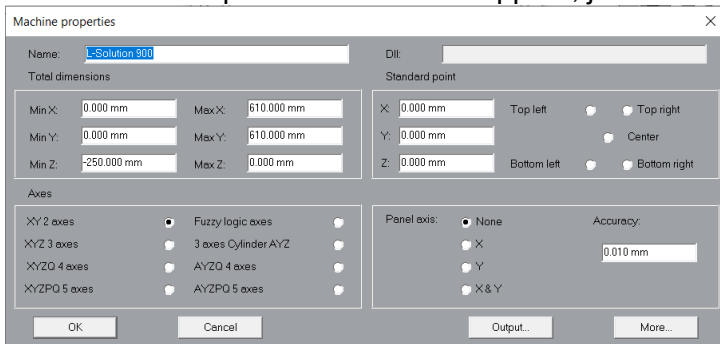
4. You'll now be asked what Wattage your laser is, you can find this on the same panel as the serial number (usually on the back of the machine):



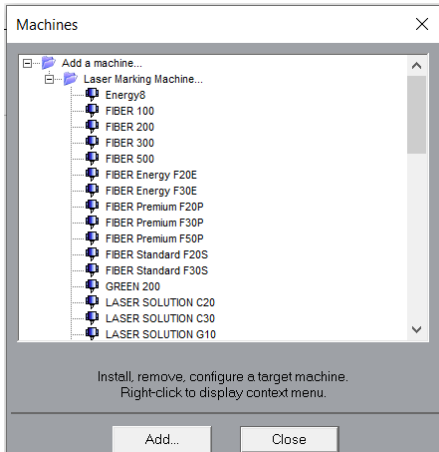
Select the Wattage & click on the Tick:



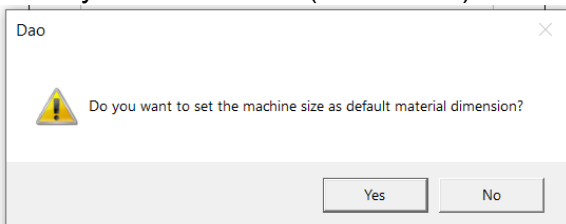
5. The Machine Properties Window will appear, just Click “OK



6. You Can now Close the “Machines” window by clicking “Close”:



7. Click “yes” to the “Dao” (Set Default) window that may appear.

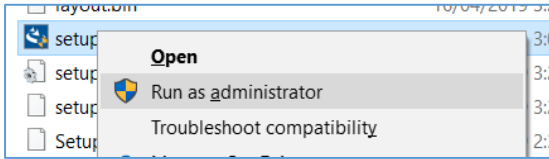


8. LaserStyle Will Be ready to use.

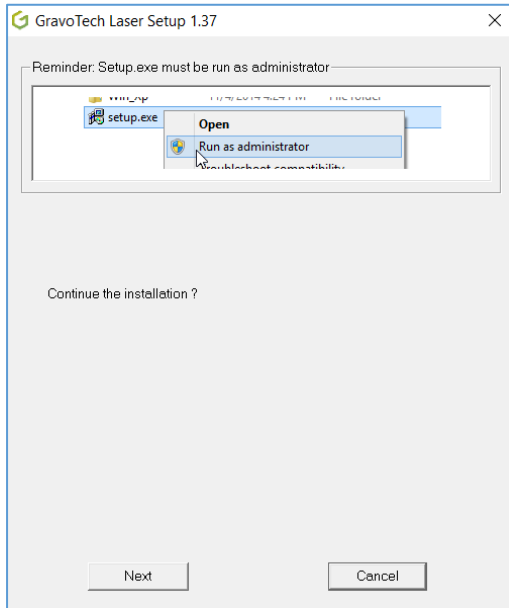
PLEASE SEE PAGE 22 FOR THE LAST STEP

For Galvo/WeLase Machines

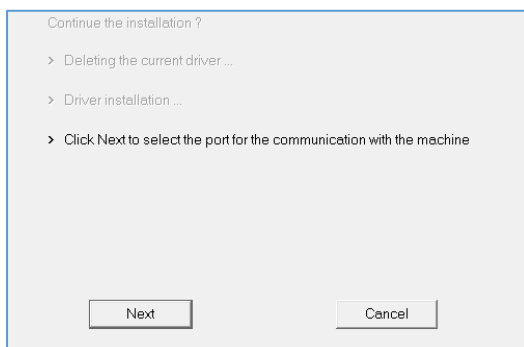
1. Open the GravoTech Laser Folder
2. Right click on “setup.exe” & select “Run as Administrator”:



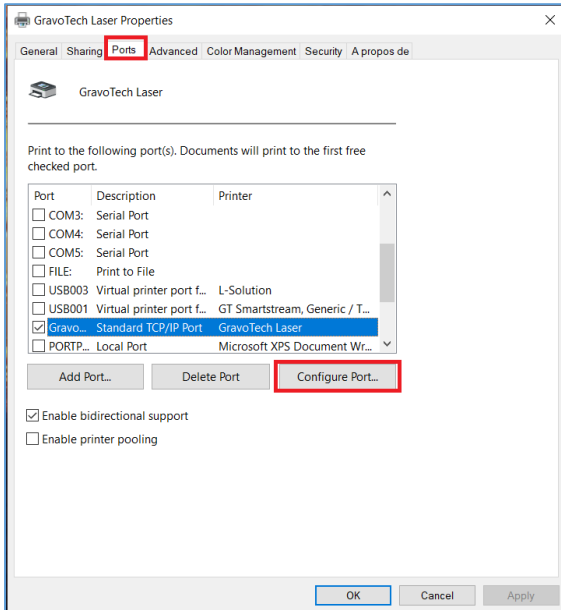
3. Select “Yes” to the notification “Do you want this app to make changes?”
4. “Continue the Installation” should be displayed, Select “Next”:



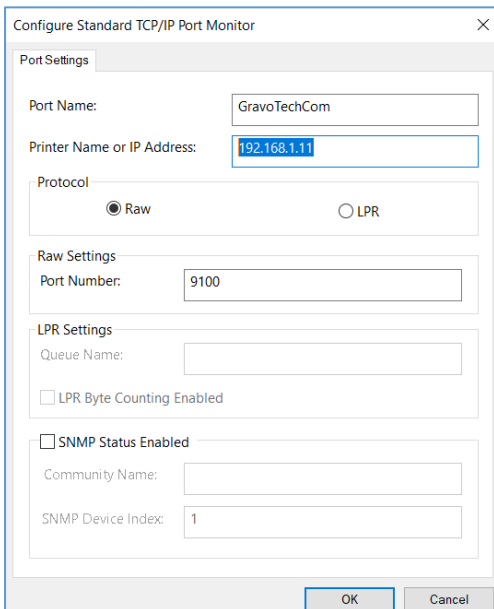
5. The Installer will run through a number of steps & may ask you to restart before continuing
6. The driver will be installed & the installer will ask you to “Click Next to select the port for the communication with the machine”:



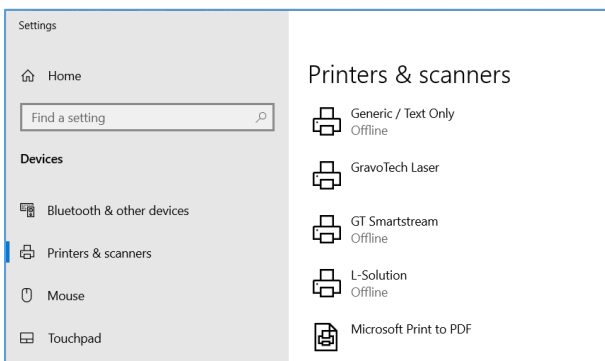
7. The “GravoTech Laser Properties” window will open, select the “Ports” tab & then click “Configure Port”:



8. Set the “Printer Name or IP Address” to the I.P. address displayed on your Galvo/WeLase then Click “OK”, 192.168.1.11 is the default address:

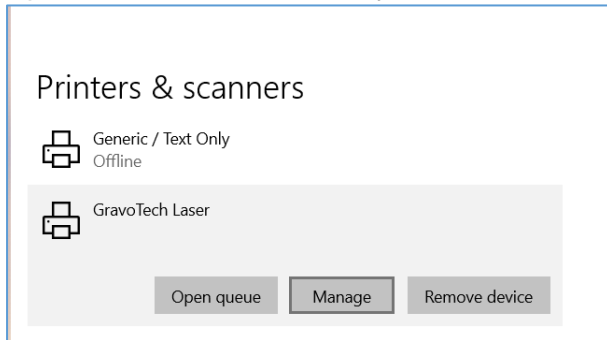


9. You should now be able to open Command Prompt & Ping the machine, if not, set your I.P. manually to an I.P. similar but not the same as the I.P. on your machine (last digits 2-3 up or down).
10. If you open Printers & Scanners in Windows Settings, you should now see “GravoTech Laser” as an installed Printer.

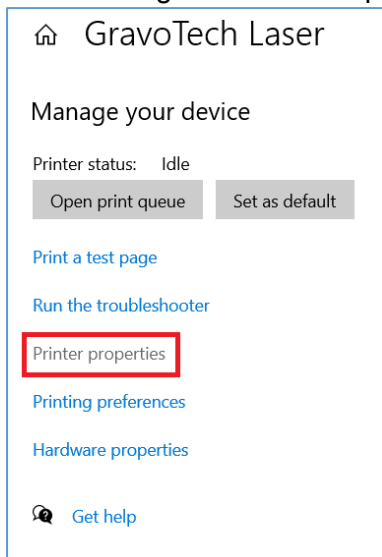


If it's not there you may need to restart.

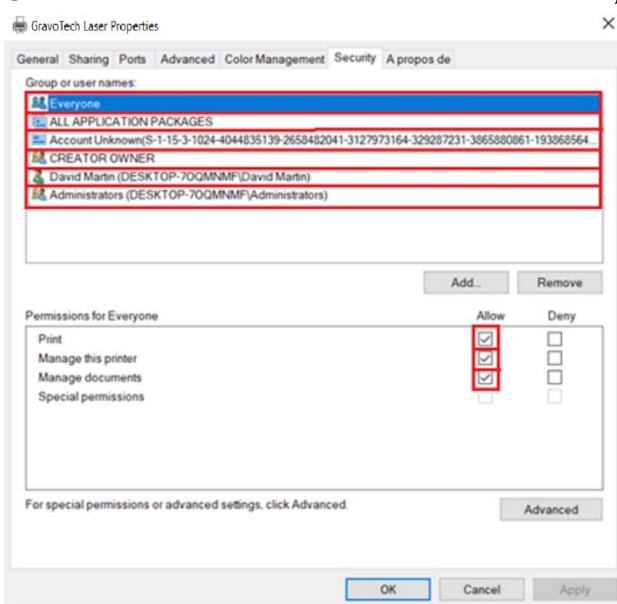
11. Open Printers & Scanners if you restarted & click on “GravoTech Laser” & select “Manage”



12. In the settings Window that pops up, select “Printer Properties:



13. In the Gravotech Laser Properties Box, Select the “Security” tab and make sure that all “Groups or Usernames” have a tick next to allow on “Print”, “Manage this printer” & “Manage Documents”:

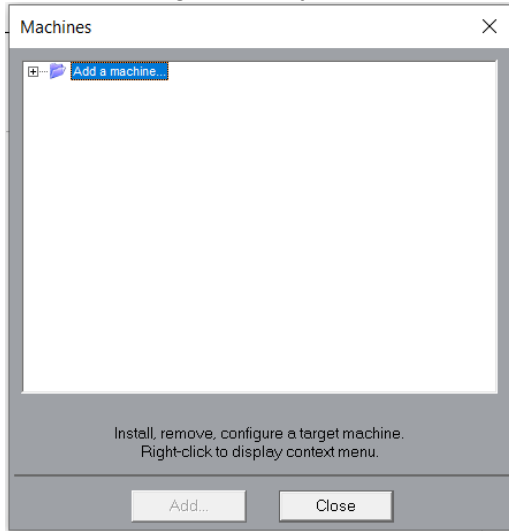


Then Click “Apply & then “OK”

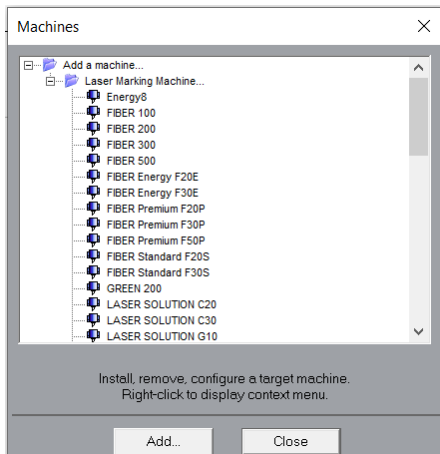
14. Now Launch “GS 9 Laser mode 64 bits (9.0.0.0) 64 bits” from the Icon on your Desktop.

Launching Gravostyle

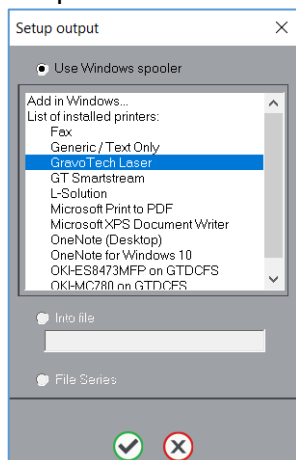
1. When opening Gravostyle for the first time, it'll prompt you to add your machine:



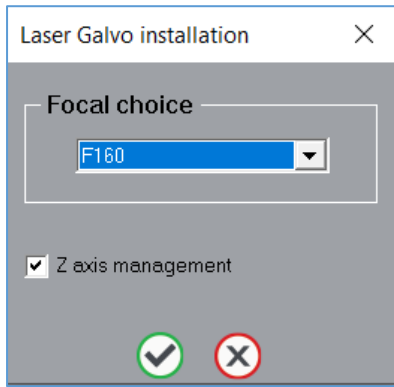
2. Click the “+” next to Add a Machine & then the “+” next to Laser Marking Machines:



3. Once you've selected the correct machine as listed on the black plate at the back of your machine, and pressed “Add” the following screen will appear, select “GravoTech Laser” and click the Tick:

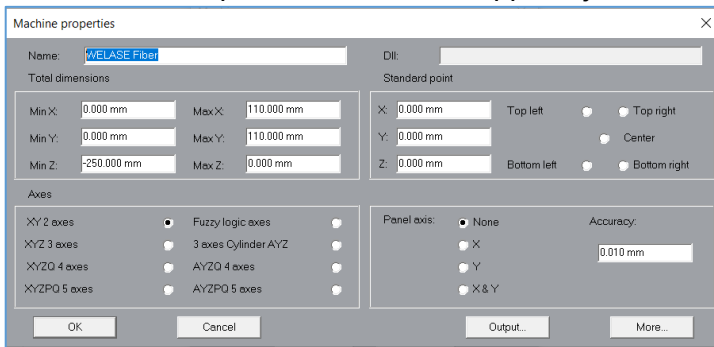


4. You'll now be asked to confirm the Focal Lens you were sold with the machine, for WeLase, it's always the only choice in the window:

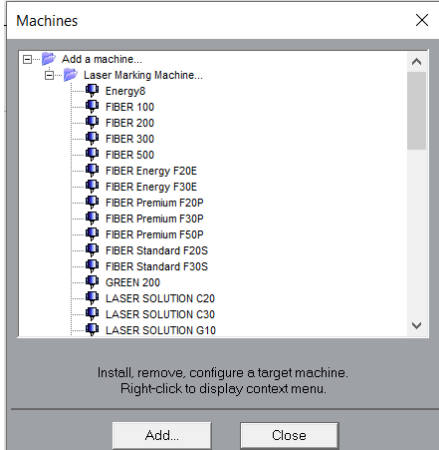


Select the Lens & click on the Tick:

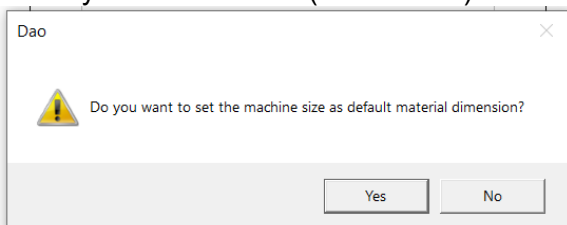
5. The Machine Properties Window will appear, just Click “OK”



6. You Can now Close the “Machines” window by clicking “Close”:



7. Click “yes” to the “Dao” (Set Default) window that may appear.



8. LaserStyle Will Be ready to use.

PLEASE SEE THE NEXT PAGE FOR THE LAST STEP

THE LAST STEP

If you have any issues or difficulties installing this software, our service team are here to help.

Please be aware that we use TeamViewer to provide remote assistance to our customers.

We strongly suggest installing this software as this enables us to log in to your computer.

You can download it for free here: www.teamviewer.com/download

Then call us on 02 9684 2400

If you require us to come on-site, please visit www.gravosupport.com.au to lodge a service request.

Gravotech Australia - Unit 1B, 23-29 South Street - RYDALMERE N.S.W. 2116 - Australia

Gravotech Queensland - Unit 7, 168 Redland Bay Road - CAPALABA Q.L.D. 4157 - Australia

Gravotech Victoria - Unit 2, 109 Lewis Road - Wantirna South V.I.C. 3152 - Australia

